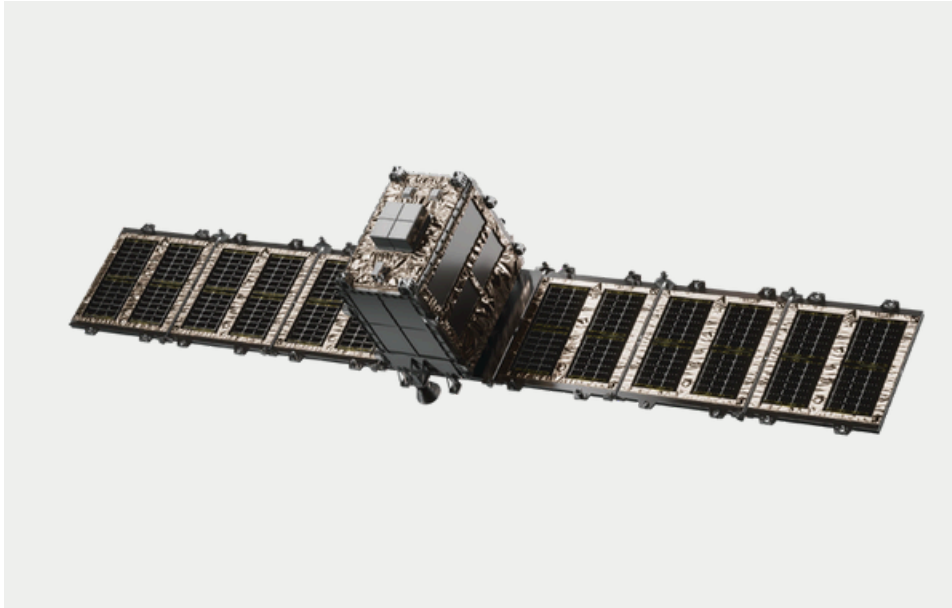


## StriX SAR Satellite



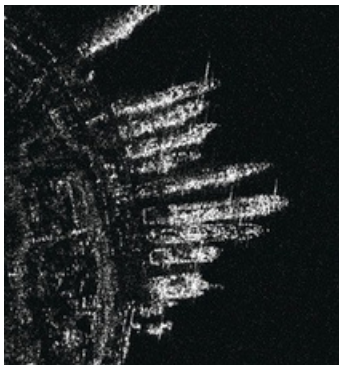
### Satellite Specifications

Mass	100kg class
Size	0.8m × 1.0m × 0.8m Before antenna deployment 5.0m × 1.0m × 0.8m After antenna deployment
Propulsion	Yes
Mission Life	Approx. 5 years
Center Frequency	9.65 GHz (X-band)
Look Direction	Right and Left
PRF	Up to 7 kHz
Chirp Bandwidth	Up to 600 MHz
RF Peak Power	Up to 1.5 kW
Polarization	W
Off-Nadir Angle	15 - 45 degree

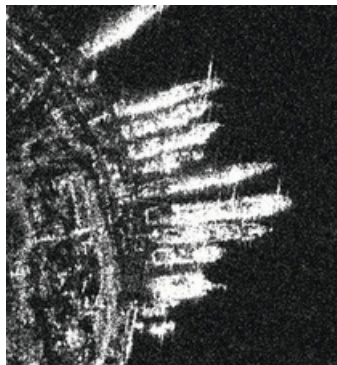
## Super-Resolution Processing

SR-GRD: Sharper, Clearer, Ready to Analyze  
Super-resolution processing cuts speckle and enhances edges, making small objects stand out while keeping precise geolocation in a standard GeoTIFF package.

Comparison of SR-GRD & GRD Ships (Sevastopol / Ukraine)



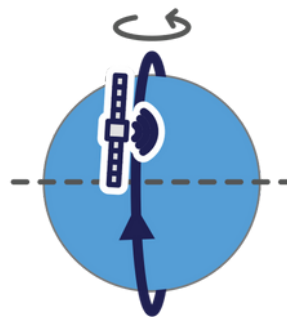
■■■■■



■■■

## Reducing Invisible Areas

The combination of sun-synchronous and inclined orbits enables imaging from four directions: north, south, east, and west. This reduces areas that are not visible in mountainous areas.



**Sun Synchronous Orbit**  
Provide global coverage by passing over the poles, enabling daily observations of any ground location.



**■■■■■ ■■■■ ■■■■**  
Increase your revisit frequency. More frequent observations of the world's most populated areas.

## Constellation Timeline

A scalable X-band SAR fleet delivers reliable, all-weather, day-night monitoring. By combining sun-synchronous and inclined orbits, it reduces blind spots and is expanding toward 30+ satellites to enable hour-level global access.

**Dec. 2020**

First Mission  
Weekly Revisits

**Current** (as of Dec 2024)

**4+** Satellites  
Daily Revisits

**2028 -**

**30+** Satellites  
Every Few Hours

# Observation Modes

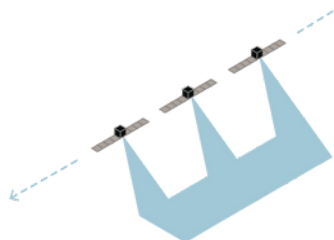
## Stripmap Mode

Nominal swath width: 10-30km

Nominal product length: 50-70km

Resolution [m] Ground  $3.6 \times$  Azimuth 2.6

\*Long Stripmap Mode can extend to up to 500km swath

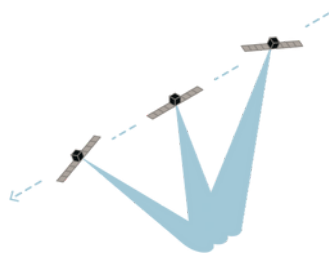


## Sliding Spotlight

Nominal swath width: 10km

Nominal product length: 10km

Resolution [m] Ground  $0.46 \times$  Azimuth 0.5

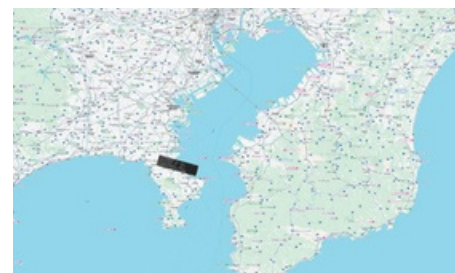
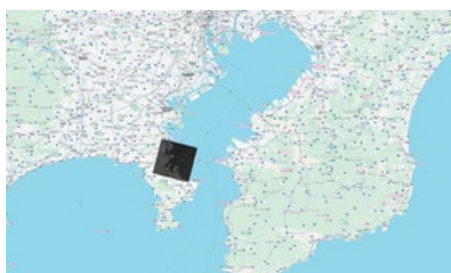
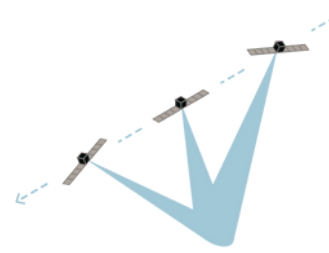


## Staring Spotlight

Nominal swath width: 10km

Nominal product length: 3km

Resolution [m] Ground  $0.46 \times$  Azimuth 0.25



Maps Data: Google © 2024, © Synspecive Inc.

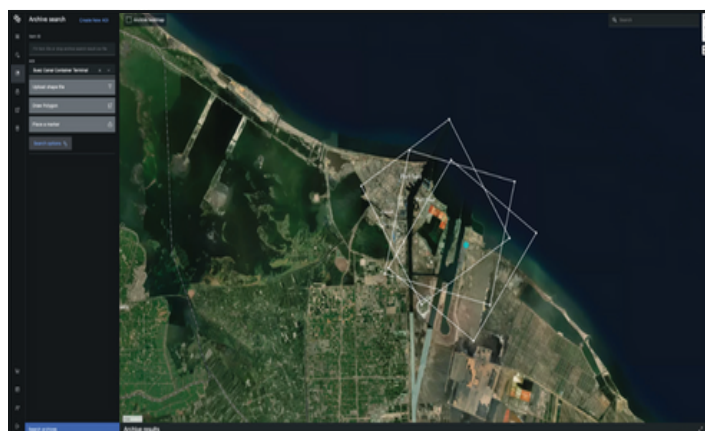
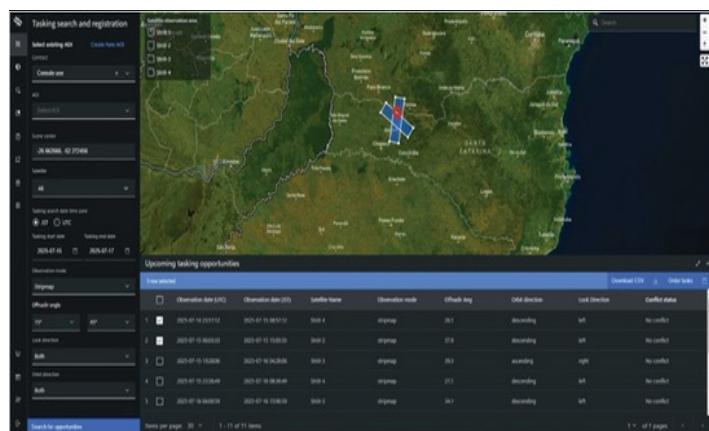
## Capture the Changing World and Explore New Possibilities

The Synspecive Data Platform provides quick and easy access to Synspecive's SAR data, empowering data-driven decision-making. Easily search, order, and download data to contribute to solutions in diverse fields.

Our platform offers the following key features:

1. Archive search and download
2. Feasibility and task management
3. Imagery acquisition progress monitoring
4. Data sharing through signed URLs
5. Integration via API connections

\* Each Data Platform service is currently being offered on a limited basis and will be gradually expanded in the future.



Contact Us:

✉ info@satpalda.

☎ +91-7838410007, +91-9718265000

📍 CP 2154, Sector 16A, Vasundhara,  
Ghaziabad-201012, Uttar Pradesh, India

**SATPALDA**  
GEOSPATIAL EXCELLENCE